

## Media valve with threaded seat – needle valve

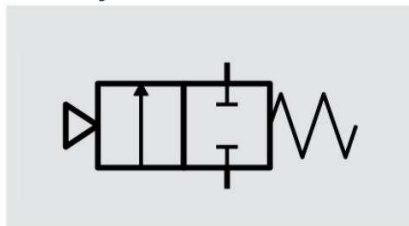
Pneumatically operated – chemical resistant

Article number: 500032

### product similar



### circuit symbol



**Note:**

The hermetic separation of the media circuit due to wear to the control air circuit is given by a separate ventilation space.  
 The hermetic separation of the control air circuit due to wear to the media circuit is given by the same separate ventilation space.

### APPLICATION

The media valve is a pneumatically operated 2/2-way valve to control liquid and gaseous media.

### DIMENSION AND WEIGHT

<b>Length (total)</b>	80 mm
<b>Diameter</b>	25 mm
<b>Weight</b>	ca. 68 g

### MATERIAL

<b>Body material</b>	stainless steel
<b>Sealings</b>	PeraSolv

### OPERATING CHARACTERISTICS

<b>max. media operation pressure</b>	18,0 bar output side / 10,0 bar input side
<b>Media temperature</b>	room temperature
<b>Media-PH-Value</b>	neutral – pH7
<b>min. control air pressure</b>	4,5 bar
<b>Control air characteristics</b>	quality class 1 (particles), pressure dew point -4°C, oil free, according to ISO 8573-1:2010

<b>Working operations</b>	up to 2 Mio., depending on application
---------------------------	--

### HOME POSITION

Media passage closed - normally closed

### CONNECTORS

<b>Control air connector</b>	quick connector for hoses OD 4 mm
<b>Media connector</b>	M16 x 1,5 outer thread; special seating
<b>Wrench size</b>	WAF 22

### DESCRIPTION

- Usable for coating applications – free of free from substances interfering with wetting agents ("silicone-free")
- Media outlet connector rotatable by 360° for a flexible integration
- Mechanical switch indicator coupled to valve needle
- Fast change of the media valve without dedicated tools possible
- Applicable for continuously pumped media
- Applicable for water based and solvent based media as well as pressurized air
- FDA/BSE-TSE certification possible

### ACCESSORIES

Available upon request